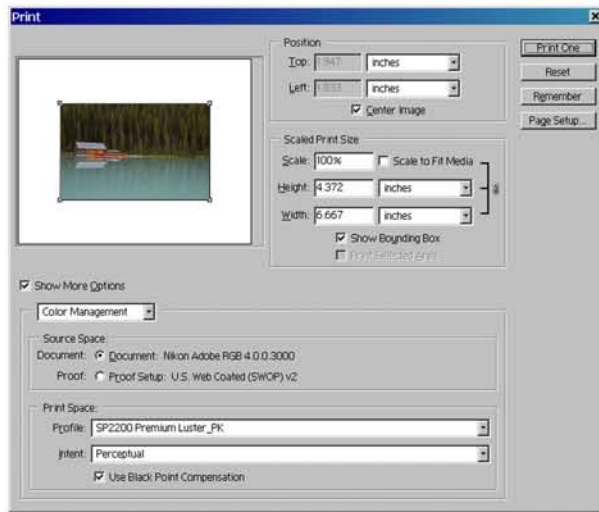
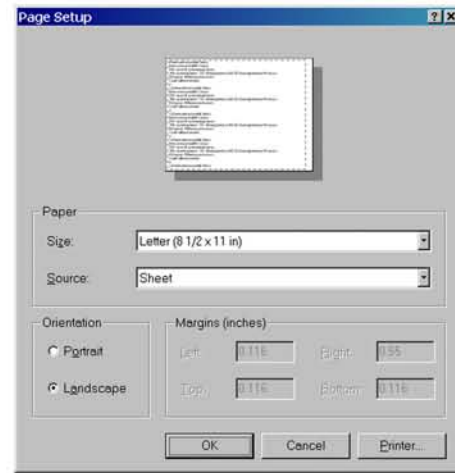


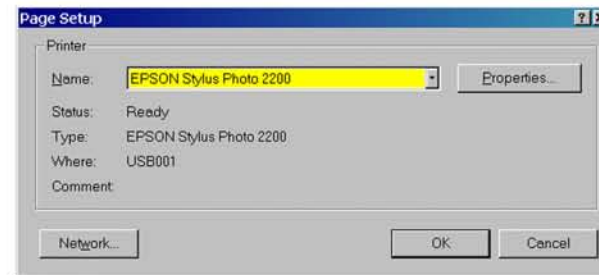
Epson 2200 Print Dialog Worksheet



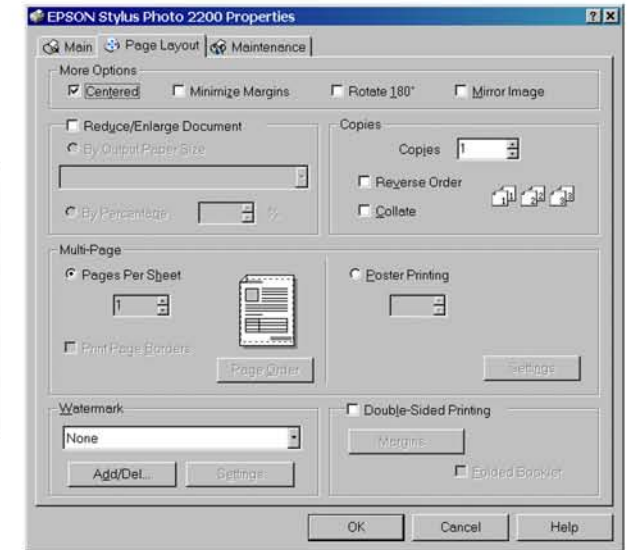
#1 Epson 2200 print dialog, click on Page Setup



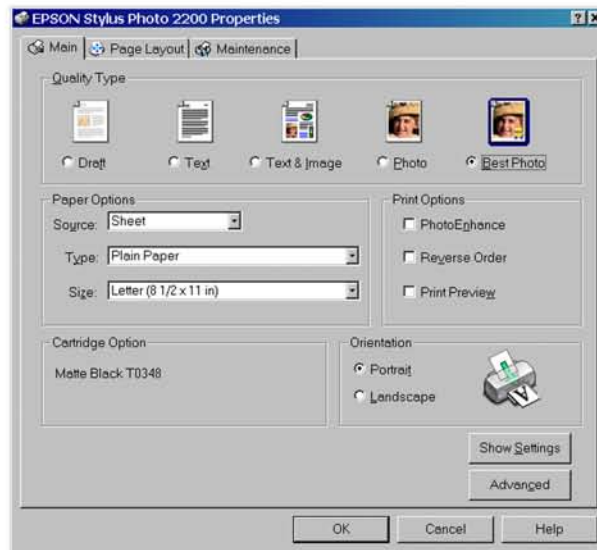
#2 click on Printer



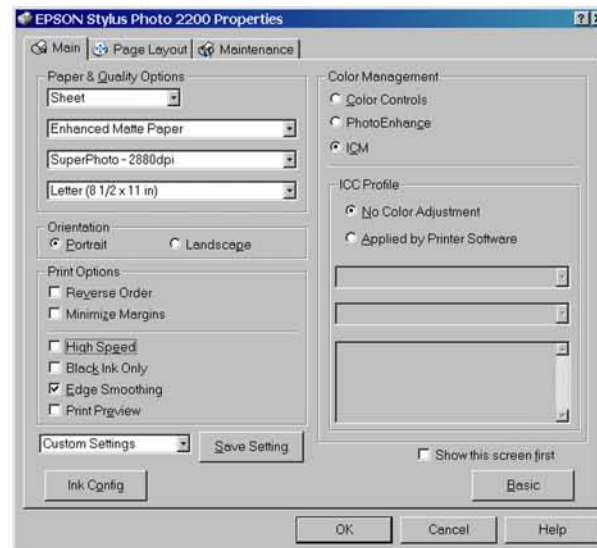
#3 Select Epson Stylus Photo 2200 and then click on Properties



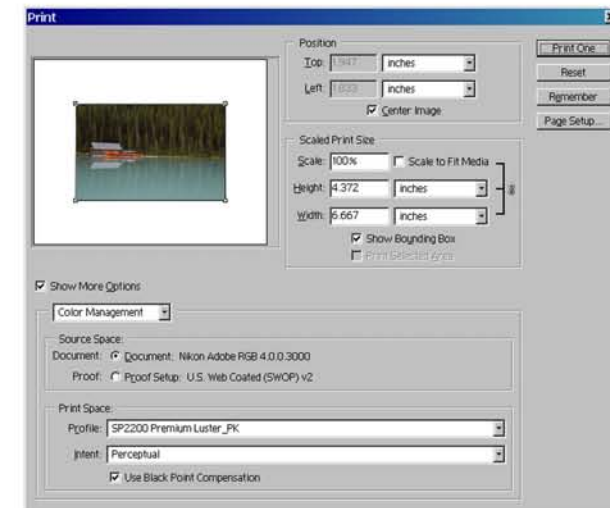
#4 Click Page Layout Tab and then click Centered, click on Main Tab



#5 On Main Tab, click on Best Photo and then click on Advanced



#6 Set your dialog box to mirror the above, the only change should be to either Portrait or Landscape and paper, Enhanced Matte or Premium Luster



#7 Very important you mirror this dialog box. You see the Print Space options when you click on Color Management and Show More Options. Set Profile to correct paper type Ask if you're having any problems!